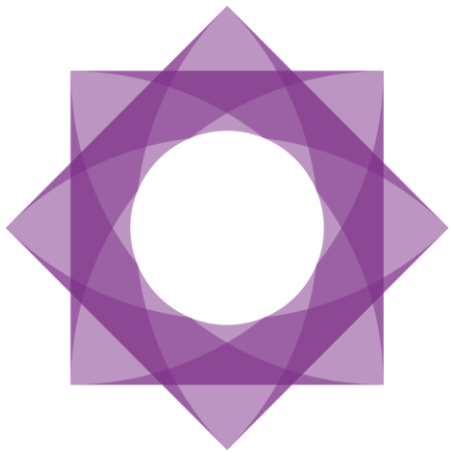



Formpipe.
Lasernet



Formpipe.
Lasernet

Lasernet
Connector for
AX2012
Release notes
5.0.0.2



Lasernet Connector for AX2012- Release notes for 5.0.0.2 [Rev. 1 – Oct 2018]

© 2018 Formpipe Software


Lasernet is a trademark of Formpipe Software

Company website www.formpipe.com

Product website www.lasernetbyformpipe.com

Context

Introduction.....	5
Bug fixes / Enhancements.....	6
292@LAC2012 - Wrong relation in the report PSAManageInvoice (between the tables PSAManageInvoiceTmp and ProjInvoiceRevenue).....	6
309@LAC2012 - Option to use and return value through LAC context method.....	6
359@LAC2012 - In the report SalesPackingSlip the Relation to the table CustPackingSlipTrans was missing for the default.....	7
367@LAC2012 - Not possible to cut and paste colon (:) into an expression.....	7
368@LAC2012 - Option add all language texts using calculated.....	7
369@LAC2012 - Resending the report 'PSAProjectInvoice' from the Lasernet-archive always preview.....	8
370@LAC2012 - AOS Printer-update fails when there's no printers.....	9
373@LAC2012 - Giro double entry when resending multiple invoices.....	10
383@LAC2012 - The AX client crashes when printing a multi-selection containing a disabled datasource.....	10
385@LAC2012 - Fixed value (like 0,1,2) in the Query Wizard get changed after finishing the Query-Wizard.....	11
386@LAC2012 - Lookup for all query-report (replacement reports) when selecting replacement report.....	12
392@LAC2012 - Option to add multiple/all attachments from line-level.....	13
393@LAC2012 - Empty XML-file when using replacement for the report RFQSend.....	15
394@LAC2012 - When using the function 'Load from report' in the Query Wizard manually added fields.....	15
was missing and it was needed to run the function 2 times to get the fields.....	15
402@LAC2012 - Lasetnet context code for creating totals/subtotals within the replacement for the Project Invoice.....	16
403@LAC2012 - Relation to the ProjProposal tables for the report PSAProjInvoice.....	17
405@LAC2012 - Force-rerun was shown in printer-dialog.....	18
410@LAC2012 - Option to transfer and rename data sources in Related sources.....	19
411@LAC2012 - Labels without prefix in Lasetnet context methods.....	19
412@LAC2012 - Report filename in the Lasetnet context methods.....	20
413@LAC2012 - Query based report layout fix where N->1 table relation used.....	20
416@LAC2012 - Removing 160 char in number formats.....	21
422@LAC2012 - Issue to use group by in AOT-Query (AOT-Query in Query Wizard).....	21
425@LAC2012 - Issue to use UtcDateTime in a report-dialog.....	22
443@LAC2012 - Loading fields and methods from other report.....	23



Bug fixes	24
Enhancements	25
General bugfixes / enhancements	25

Introduction

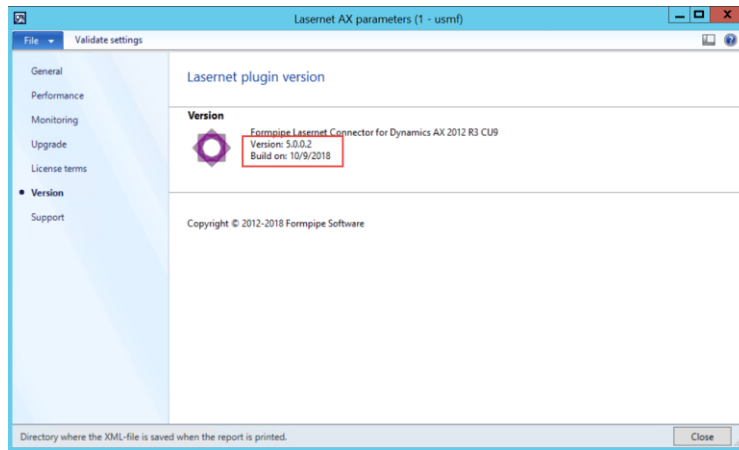
LAC2012 version 5.0.0.2 is available in both a model containing the complete software and as XPO/Project containing the updated objects for 5.0.0.1. (Including CU1 and CU2 for LAC2012 version 5.0.0.1)

The model also contains CU1 and CU2 for 5.0.0.1.

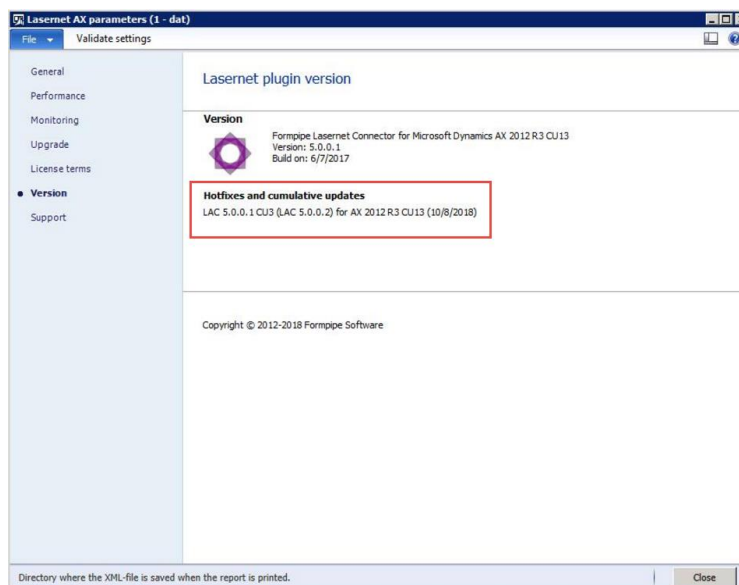
After installing either the model-file or importing the XPO the **Version** (if model install) or the **Hotfixes and cumulative updates** (if importing XPO) should contain LAC 5.0.0.2 or CU3 – Like the following.

Only use the XPO if you are upgrading from LAC2012 version 5.0.0.1. It's also possible to use the model-file to upgrade from LAC2012 version 5.0.0.1.

After installation from the model-file



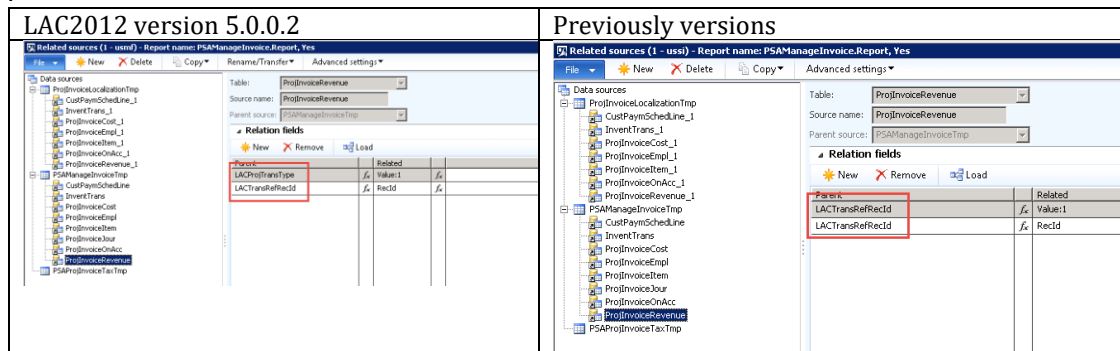
After importing XPO – In case of upgrading from 5.0.0.1



Bug fixes / Enhancements

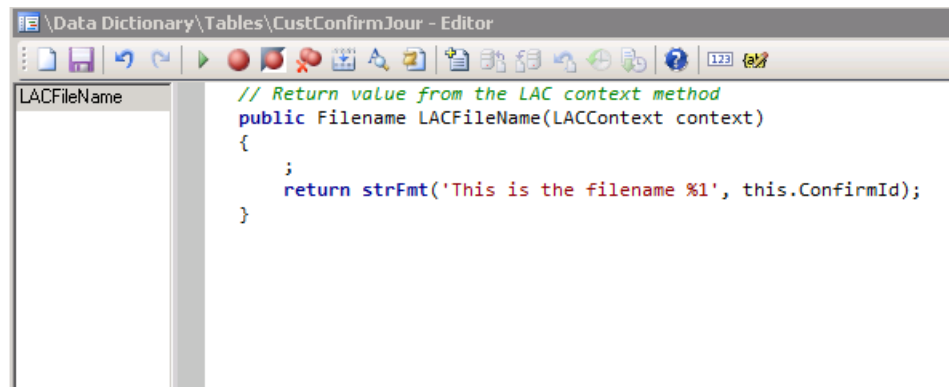
292@LAC2012 – Wrong relation in the report PSAManageInvoice (between the tables PSAManageInvoiceTmp and ProjInvoiceRevenue)

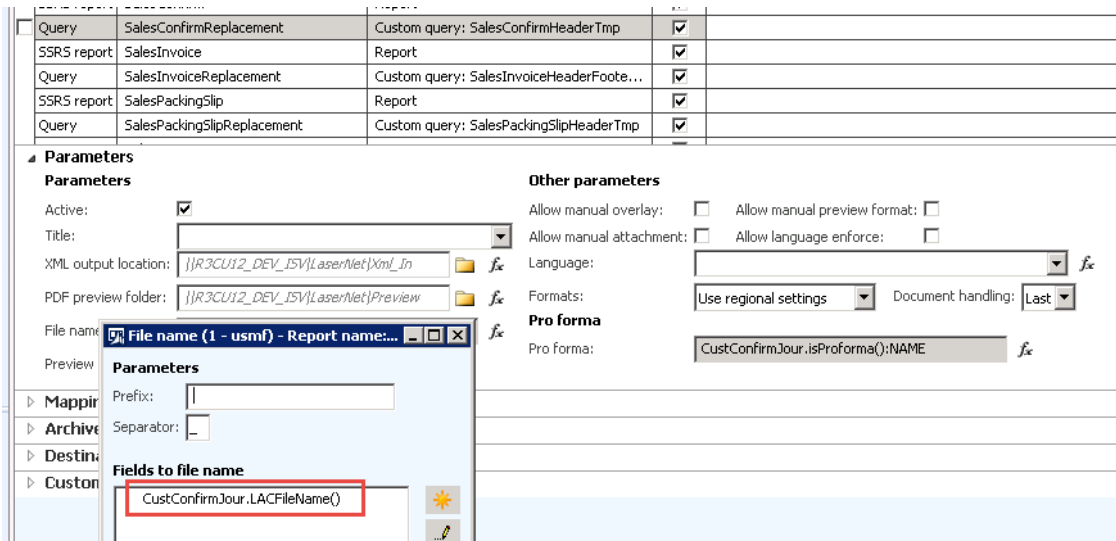
In previously versions the relation between the tables PSAManageInvoiceTmp and ProjInvoiceRevenue was wrong.
This is fixed in LAC2012 version 5.0.0.2.



309@LAC2012 – Option to use and return value through LAC context method

LAC2012 version 5.0.0.2 now supports the option to return a value from the LAC Context methods. Including the option to return a record from which needed fields can get selected/extracted.





359@LAC2012 - In the report SalesPackingSlip the Relation to the table CustPackingSlipTrans was missing for the default

In previously versions of LAC2012 the relation to the CustPackingSlipTrans was missing in the related sources when creating a report using the default.
This is fixed in LAC2012 version 5.0.0.2.

367@LAC2012 – Not possible to cut and paste colon (;) into an expression

In previously versions of LAC2012 it was not possible to paste text containing a colon (;) like 'THIS : IS : A : TEST'.
Only **THIS** was pasted into the expression/segmented entry.
This is fixed in LAC2012 version 5.0.0.2.

LAC2012 version 5.0.0.2					Previously versions				
Visible	Condition	Name	Output	Expression	Visible	Condition	Name	Output	Expression
<input type="checkbox"/>	None	FFCustAndPaste	FFCustAndPaste	value:THIS : IS : A : TEST	<input type="checkbox"/>	None	FFCustAndPaste	FFCustAndPaste	value:THIS

368@LAC2012 – Option add all language texts using calculated

LAC2012 version 5.0.0.2 contains a new feature which will add all created language texts for the current report language.
This is extremely fast and easy compared to adding the language texts through a sub report.

Visible	Condition	Name	Output	Expression
<input checked="" type="checkbox"/>	None	LACLanguageText	LACLanguageText	Calculated.LanguageTexts()

```

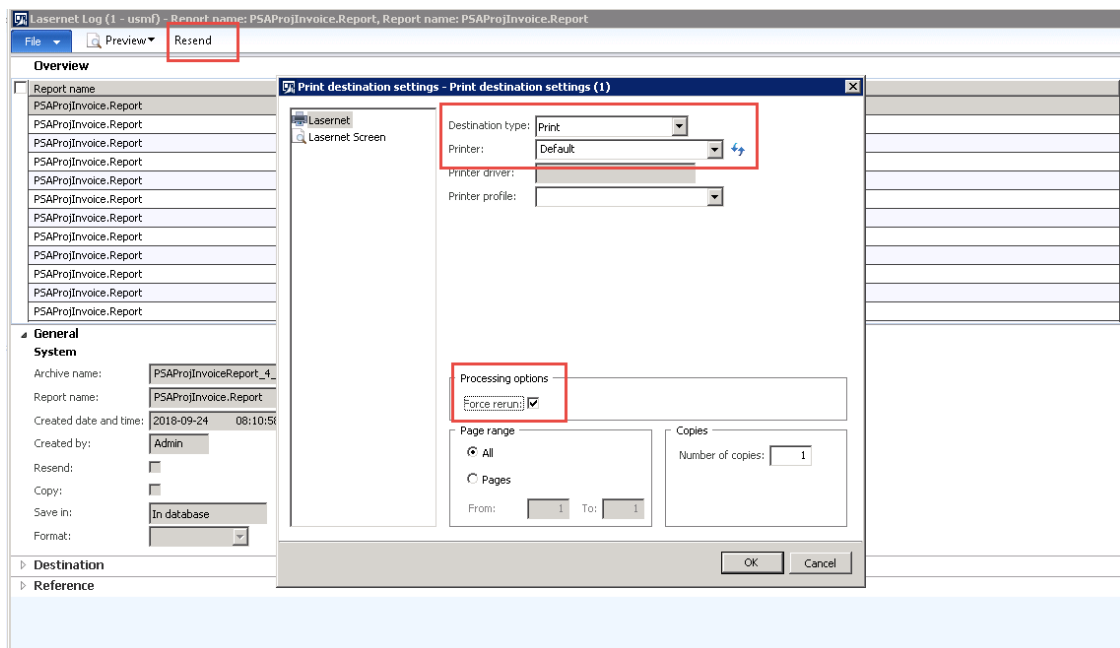
- <FPHeader>
- <LACAttachmentsRelatedSources>
  <ReportLanguageId>en-us</ReportLanguageId>
  <BarcodeReport>Barcode Label 30x30</BarcodeReport>
  <LAC0001>Created by</LAC0001>
  <LAC0002>Orderer</LAC0002>
  <LAC0003>Fee</LAC0003>
  <LAC0004>Customer req.</LAC0004>
  <LAC0005>Delivery Term Notes</LAC0005>
  <LAC0006>Customer no.</LAC0006>
  <LAC0007>Delivery address</LAC0007>
  <LAC0008>Notes</LAC0008>
  <LAC0009>Your VAT Number</LAC0009>
  <LAC0010>Our VAT Number</LAC0010>
  <LAC0011>Reverse Charge / Free of VAT</LAC0011>
  <LAC0012>VAT</LAC0012>
  <LAC0013>Net amount</LAC0013>
  <LAC0014>Description</LAC0014>
  <LAC0015>Total</LAC0015>
  <LAC0016>Item no.</LAC0016>
  <LAC0017>Your contact</LAC0017>
  <LAC0018>Expiration date</LAC0018>
  <LAC0019>Unit price</LAC0019>
</LACAttachmentsRelatedSources>
</FPHeader>

```

369@LAC2012 - Resending the report 'PSAProjectInvoice' from the Lasernet-archive always preview

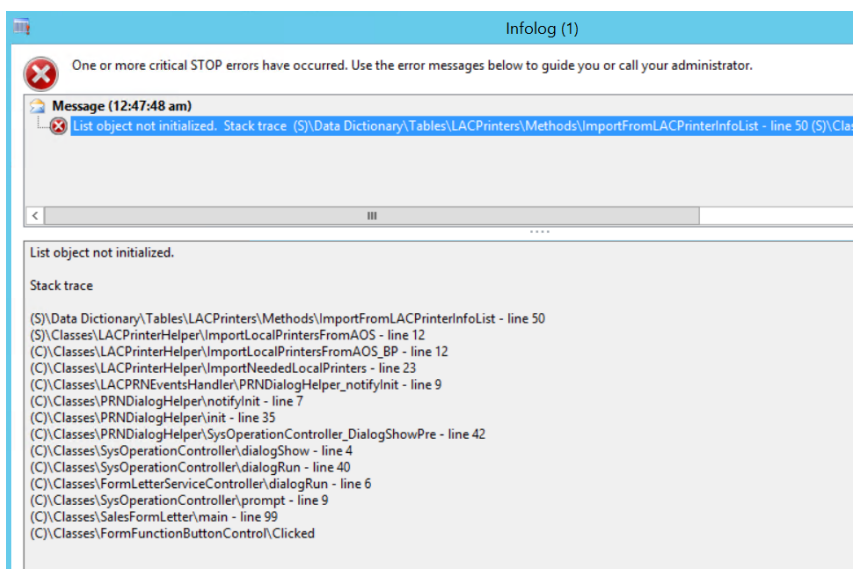
In previously version of LAC2012 resending of the PSAProjectInvoice from the Lasetnet-archive with 'Force rerun' was always showing the report to the screen. This is fixed in LAC2012 version 5.0.0.2.

Resending the PSAProjectInvoice from the Lasetnet-archive was always previewed.



370@LAC2012 - AOS Printer-update fails when there's no printers.

In previously version of LAC2012 an error like the following was thrown in relation to the Lasernetnet-buttons if no printers existed at the AOS. This is fixed in LAC2012 version 5.0.0.2.



List object not initialized.

Stack trace

(S)\Data Dictionary\Tables\LACPrinters\Methods\ImportFromLACPrinterInfoList - line 50

(S)\Classes\LACPrinterHelper\ImportLocalPrintersFromAOS - line 12
 (C)\Classes\LACPrinterHelper\ImportLocalPrintersFromAOS_BP - line 12
 (C)\Classes\LACPrinterHelper\ImportNeededLocalPrinters - line 23
 (C)\Classes\LACPRNEventsHandler\PRNDialogHelper_notifyInit - line 9
 (C)\Classes\PRNDialogHelper_notifyInit - line 7
 (C)\Classes\PRNDialogHelper_init - line 35
 (C)\Classes\PRNDialogHelper\SysOperationController_DialogShowPre - line 42
 (C)\Classes\SysOperationController_dialogShow - line 4
 (C)\Classes\SysOperationController_dialogRun - line 40
 (C)\Classes\FormLetterServiceController_dialogRun - line 6
 (C)\Classes\SysOperationController_prompt - line 9
 (C)\Classes\SalesFormLetter\main - line 99
 (C)\Classes\FormFunctionButtonControl\Clicked

373@LAC2012 - Giro double entry when resending multiple invoices

In previously versions of LAC2012 the Giro-section was repeated two times if the main-report contained a sub-report.

This is fixed in LAC2012 version 5.0.0.2.

The following structure was repeated two times

```

- <GiroGiroFIK>
- <Tablix>
  - <AltRecId_Collection>
    - <AltRecId>
      <InvoiceAccount>US-001</InvoiceAccount>
      <LACRecId_DONOT_CHANGE_CashDiscAmount>5637144623</LACRecId_DONOT_CHANGE_CashDiscAmount>
      <InvoiceName>Contoso Retail San Diego</InvoiceName>
      <InvoiceAddress>456 Peach Road San Diego,CA 92114 USA</InvoiceAddress>
      <InvoiceAmountNODecimals />
      <InvoiceAmountDecimals>00</InvoiceAmountDecimals>
      <InvoiceAmountDecimals1>00</InvoiceAmountDecimals1>
      <InvoiceAmountNODecimals1 />
      <DueDate>10/4/2018</DueDate>
      <OcrField>00000010000008</OcrField>
      <FICreditorID_DK>11111111</FICreditorID_DK>
      <FICreditorID_DK1>11111111</FICreditorID_DK1>
      <CompanyName>Contoso Entertainment System USA</CompanyName>
      <CompanyAddress>123 Coffee Street Suite 300 DNK</CompanyAddress>
      <CompanyPhone />
      <FICreditorID_DK2>11111111</FICreditorID_DK2>
      <CompanyName1>Contoso Entertainment System USA</CompanyName1>
      <CompanyAddress1>123 Coffee Street Suite 300 DNK</CompanyAddress1>
      <CompanyPhone1 />
      <LABEL_Customer_account>Customer account</LABEL_Customer_account>
    </AltRecId>
  </AltRecId_Collection>
</Tablix>
</GiroGiroFIK>

```

383@LAC2012 - The AX client crashes when printing a multi-selection containing a disabled datasource

In previously versions of LAC2012 the client was crashing if the form contains a disabled datasource and this was used with multi-selection.

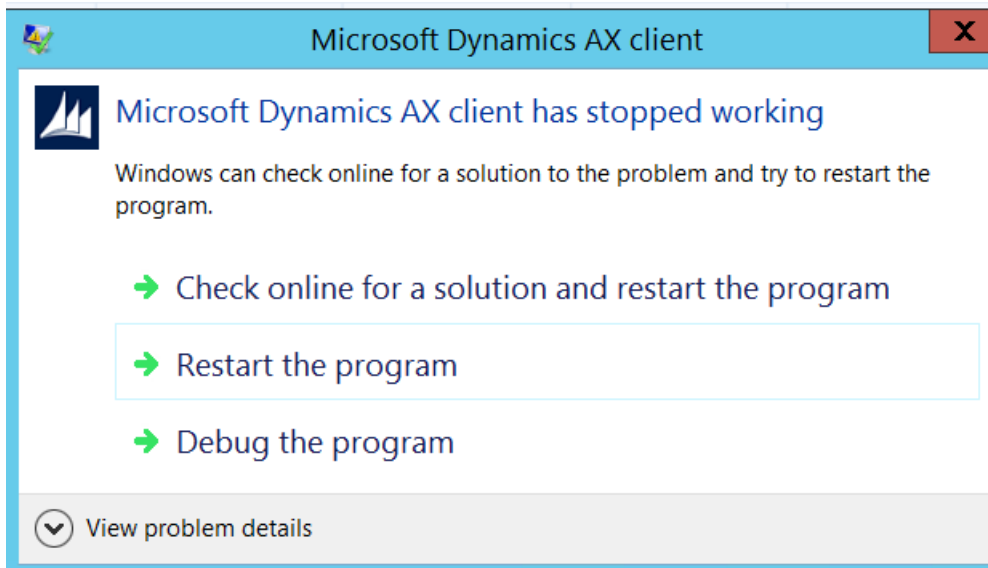
This is fixed in LAC2012 version 5.0.0.2.

On-hand (1 - usmf) - Closed: No, New Record

File Transactions **Formpipe** Net requirements Intercompany on-hand Quantity adjustment Counting history

Overview Catch weight over Multi selection with disabled datasource Archive

Item number	Product name	Search name	Physical inventory	Physical reserved	Ava
1000	Surface Pro 128 GB	1001	410.00		
99999	Speaker Cleaning Towel	CleaningTowel	54.00		
A0001	HDMI 6' Cables	HDMI 6' Cables	11,410.00	118.00	
A0002	HDMI 12' Cables	HDMI 12' Cables	10,010.00		
D0001	MidRangeSpeaker	MidRangeSpeaker	11.00	5.00	
D0002	Cabinet	Cabinet	705.00		
D0003	StandardSpeaker	StandardSpeaker	11.00	11.00	
D0004	HighEndSpeaker	HighEndSpeaker	1.00		



385@LAC2012 - Fixed value (like 0,1,2) in the Query Wizard get changed after finishing the Query-Wizard

In previously versions of LAC2012 ranges containing a fixed value in the Query Wizard wasn't saved correctly and the value was cleared after using the finishing the wizard.

In LAC2012 version 5.0.0.2 fixed values in the ranges is saved correctly.

Relation

Data source:

Parent:

Structure



Layout:

Parameters

Join: Fetch:

Default fetch mode is 1:1 as it performs better than 1:n fetch mode. Fetch mode is NOT an indicator whether one or many records will be selected!

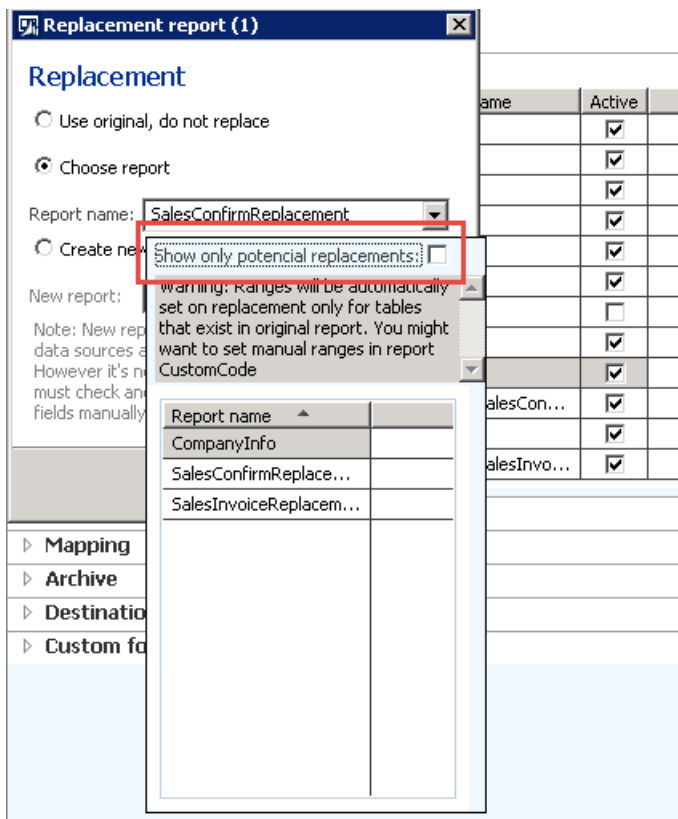
Fields

 New  Delete

Related table	Related field	SalesAgreementHeader
AgreementHeaderTmp	LACJourRefRecId	RecId
AgreementHeaderTmp	LACSalesPurchProformaType	2

386@LAC2012 - Lookup for all query-report (replacement reports) when selecting replacement report

In previous versions of LAC2012 it was only possible to select replacement reports (Query reports) containing exactly same data sources as the original SSRS-report.
 In LAC2012 version 5.0.0.2 an option to show either all or potential replacement reports is added.



392@LAC2012 - Option to add multiple/all attachments from line-level

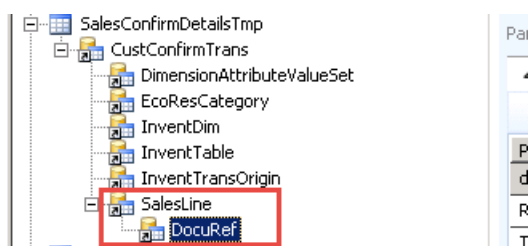
In LAC2012 version 5.0.0.2 a new option to add attachments from all details is added through the method LACAddAttachments.

Select either the method from the table DocuRef in the 'Related sources' or in the Query Wizard.

Like the following

Adding attachments for lines/details in the elements

Fields					
Visible	Condition	Name	Output	Expression	
<input checked="" type="checkbox"/>	None	LACAttachmentsRelatedSour...	LACAttachmentsRelatedSources	DocuRef.LACAddAttachments()	
<input checked="" type="checkbox"/>	None	RecId	FIELD_DocuRef_RecId	DocuRefQuery.RecId	
<input checked="" type="checkbox"/>	None	Name	FIELD_DocuRef_Name	DocuRefQuery.Name	



Adding attachments for lines/details through the Query-Wizard

Tables

Select the tables to base the report on.

Primarily, select in the list of all tables and then, if required, in the list of related tables.

Report Wizard (1)

Select fields

Select the field groups and fields to be included in the report.

Afterwards add either DocuRef from the 'Related sources' or from the 'Query Wizard' into the configuration of the attachments.

Attachments (1 - usmf) - Report name: SalesConfirmReplacement, Yes

File

Report name: SalesConfirmReplac...

SalesConfirmReplacement

Skip generic attachments:

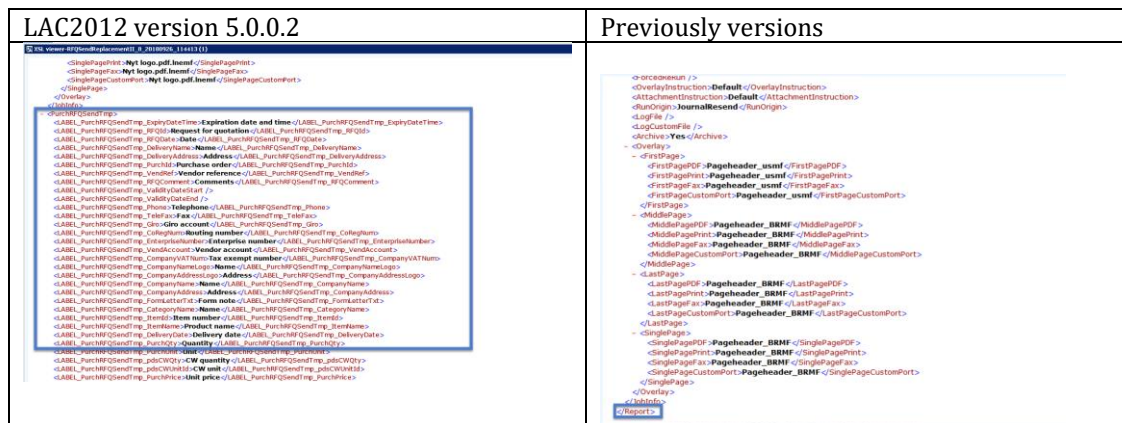
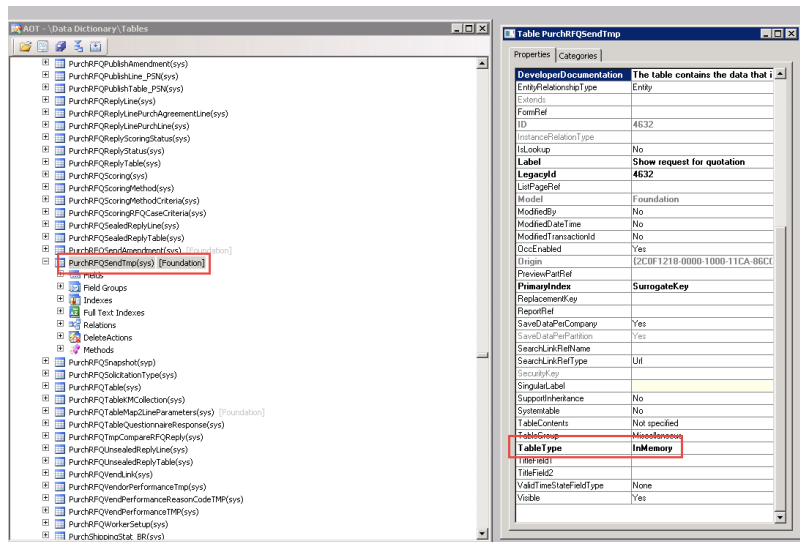
Report attachments

+ New -X Delete Up Down

Document reference table	Restriction	Type		Document type	PDF	Printer	Fax	Custom print
DocuRef	External	File	f _e	All types	<input type="checkbox"/>	<input checked="" type="checkbox"/>	<input checked="" type="checkbox"/>	<input checked="" type="checkbox"/>
DocuRefQuery	External	File	f _e	All types	<input checked="" type="checkbox"/>	<input checked="" type="checkbox"/>	<input checked="" type="checkbox"/>	<input checked="" type="checkbox"/>

393@LAC2012 - Empty XML-file when using replacement for the report RFQSend

In previously versions of LAC2012 it was not possible to do report-replacement for reports using the tabletype *InMemory*. – Like the reports 'RFQSend', 'VendPhoneList'. It would create an empty XML-file only containing the Jobinfo-section. This is fixed in LAC2012 version 5.0.0.2.

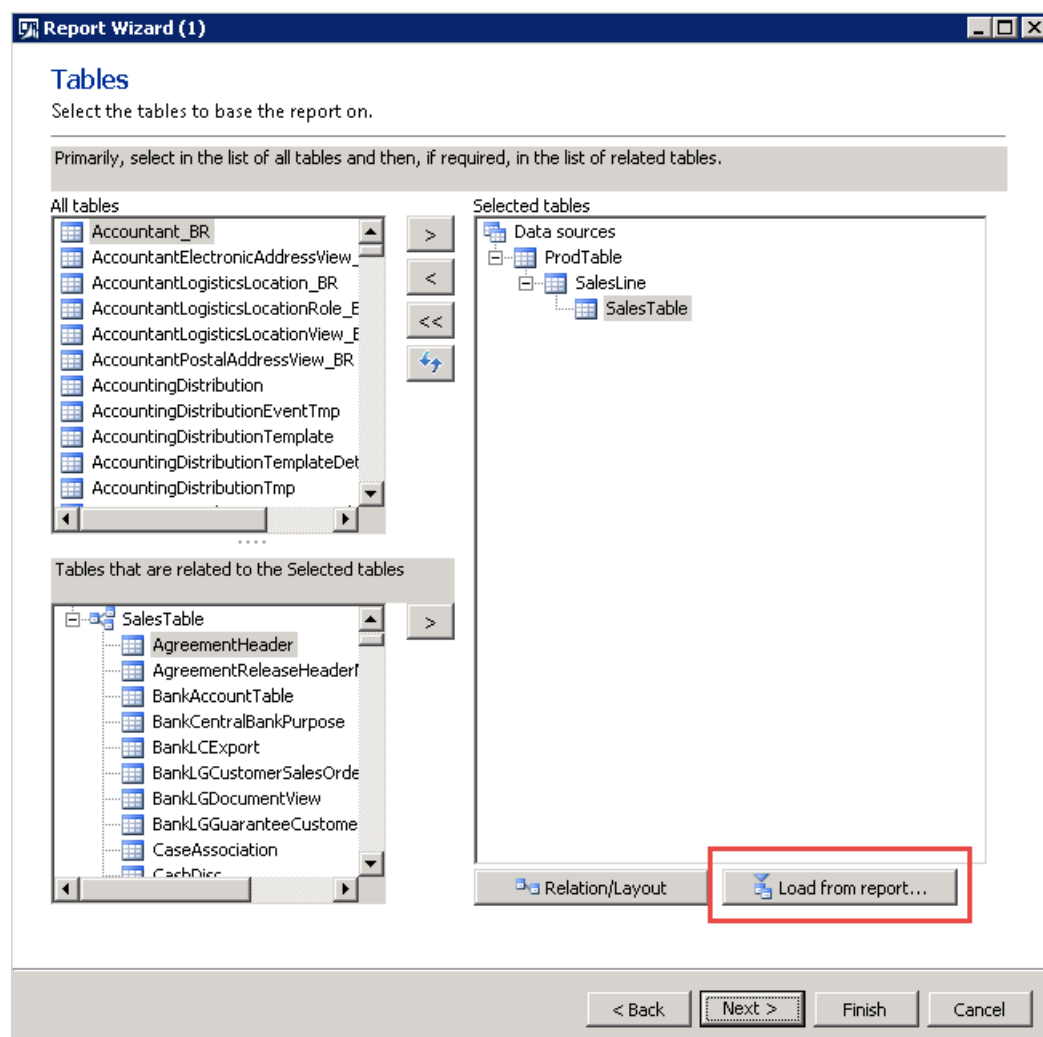


394@LAC2012 - When using the function 'Load from report' in the Query Wizard manually added fields was missing and it was needed to run the function 2 times to get the fields

In previously versions of LAC2012 it was required to use the function 'Load from report' 2 times in the query-Wizard to load structure/fields from another report. Fields was not loaded until the second time the 'Load from report' was used. And methods wasn't copied correctly from the source-query into the destination-query.

Also an issue to load the ranges (relation) between tables if the ranges (relation) was added manually.

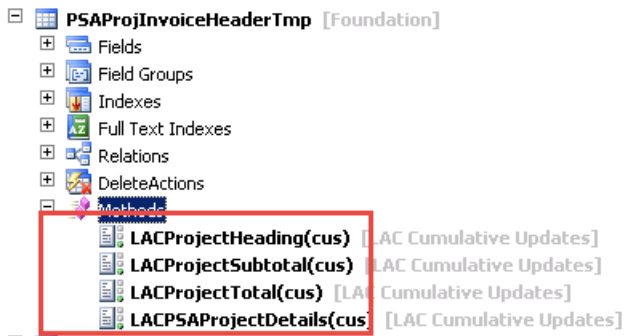
This is fixed in LAC2012 version 5.0.0.2.



402@LAC2012 - Lasernet context code for creating totals/subtotals within the replacement for the Project Invoice

In LAC2012 version 5.0.0.2 the following Lasetnet context methods is added at the table PSAProjInvoiceHeaderTmp.

This is to create the totals/subtotals for the report-replacement for the report 'PSAProjInvoice'.

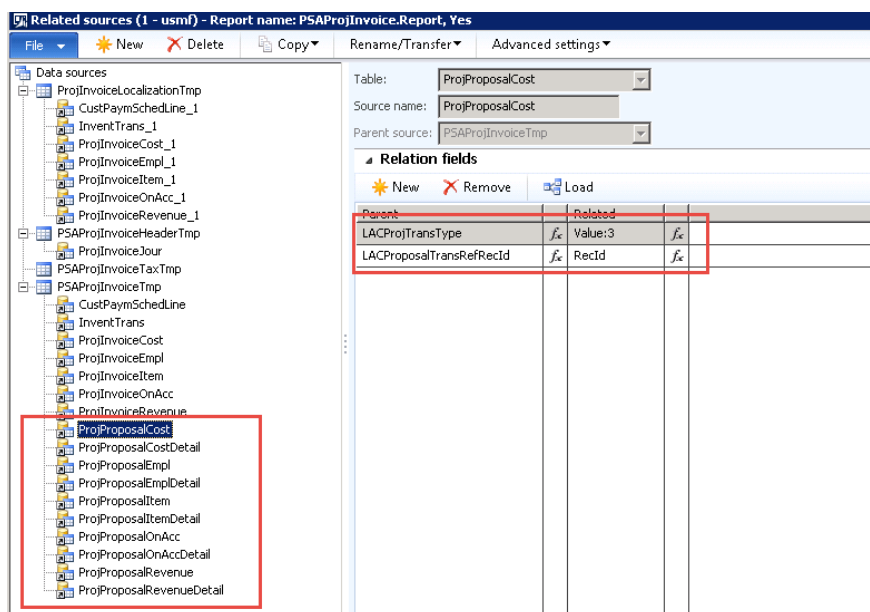


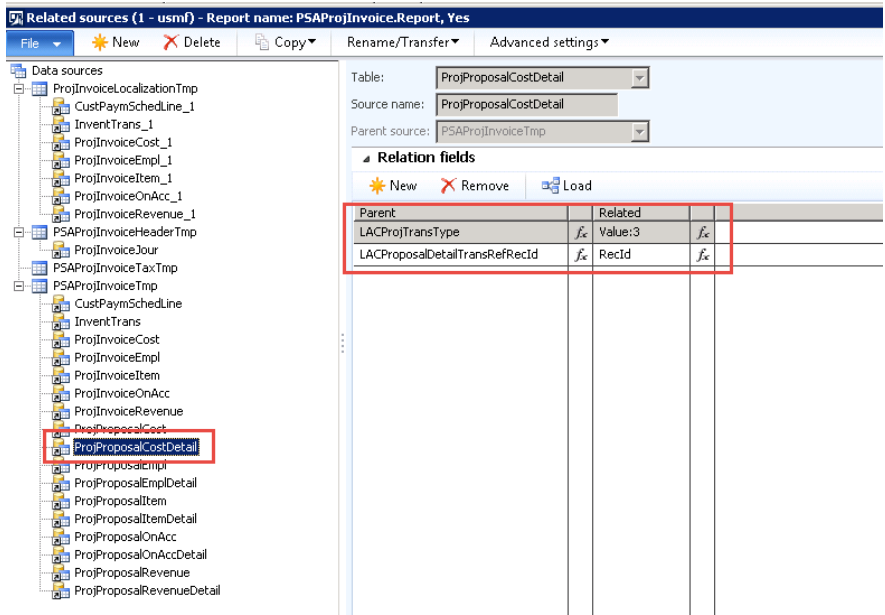
403@LAC2012 - Relation to the ProjProposal tables for the report PSAProjInvoice

In LAC2012 version 5.0.0.2 the following relations is added to the report PSAProjInvoice for creating a proposal invoice.

ProjProposalCost
ProjProposalCostDetail
ProjProposalEmpl
ProjProposalEmplDetail
ProjProposalItem
ProjProposalItemDetail
ProjProposalOnAcc
ProjProposalOnAccDetail
ProjProposalRevenue
ProjProposalRevenueDetail

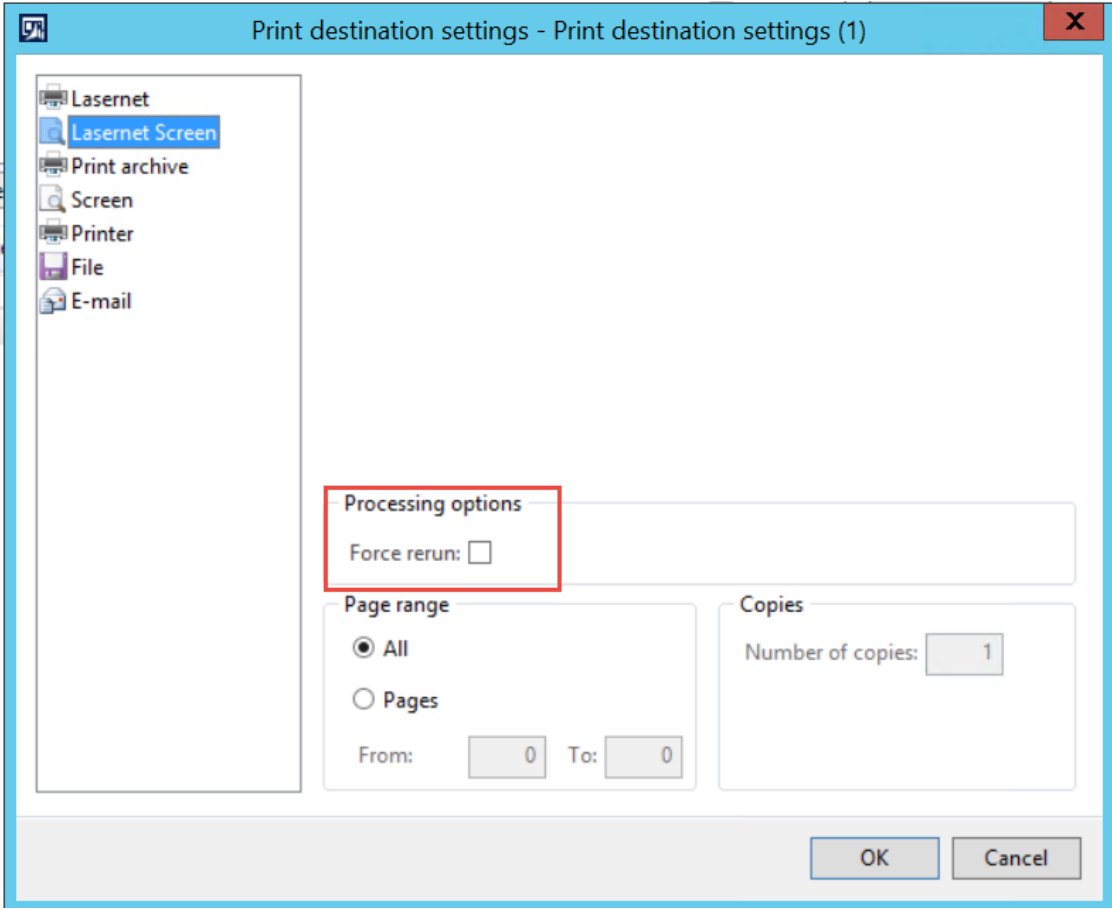
Example on relations between the table PSAProjInvoiceTmp and the tables *ProjProposalCost* and *ProjProposalCostDetail*.





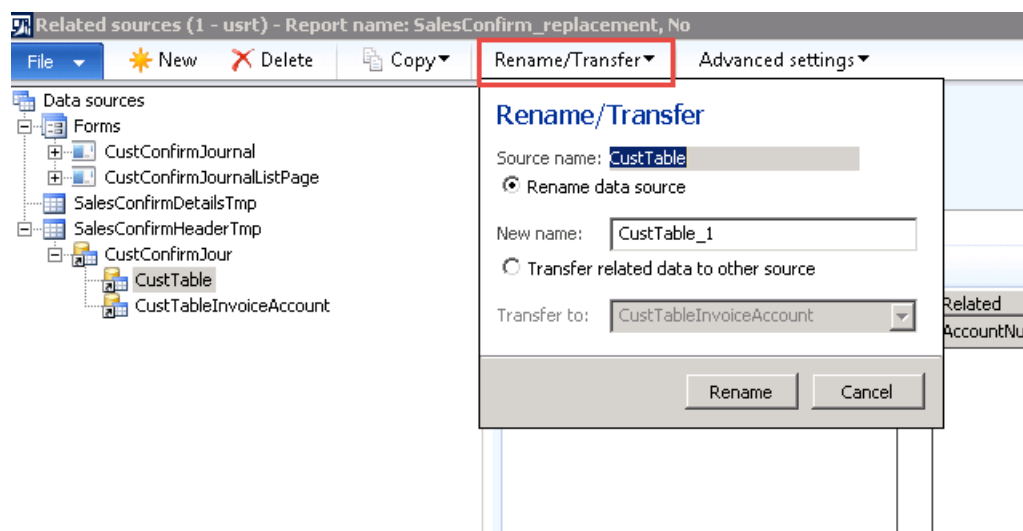
405@LAC2012 - Force-rerun was shown in printer-dialog

In previously versions of LAC2012 the force-rerun was shown in the printer-dialog. This was related to the Lasernetet/Print-buttons and is fixed in LAC2012 version 5.0.0.2.



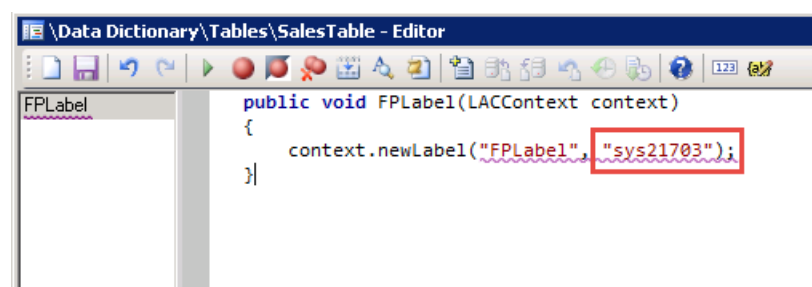
410@LAC2012 - Option to transfer and rename data sources in Related sources

LAC2012 version 5.0.0.2 contains an option in the 'Related sources' to rename and/or transfer a data-source.



411@LAC2012 - Labels without prefix in Lasernet context methods

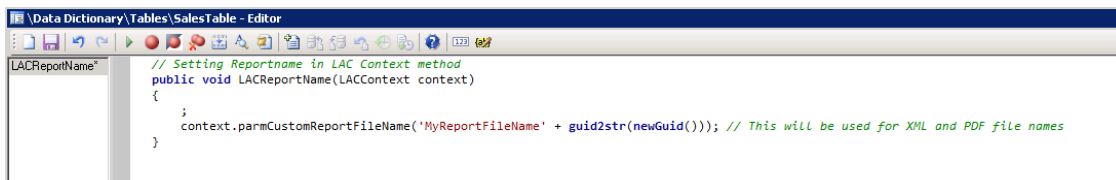
In previously versions of LAC2012 it was needed to prefix labels in the LAC context for ensuring the correct language in the translation. (report language)
In LAC2012 version 5.0.0.2 it's possible to added labels without the @-prefix – Like the following.



```
public void FPLabel(LACContext context)
{
    context.newLabel("FPLabel", "sys21703");
}
```

412@LAC2012 - Report filename in the Lasernet context methods

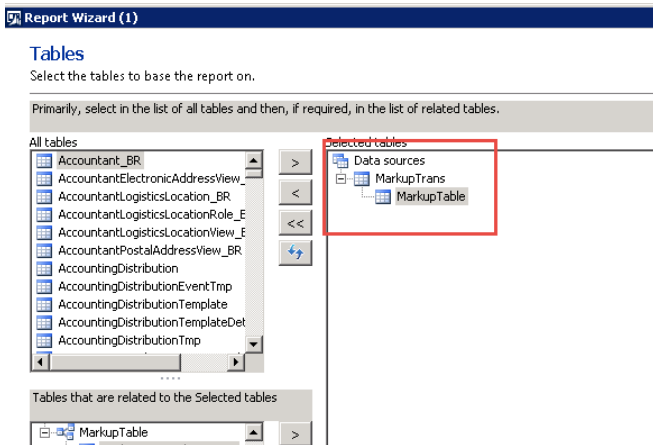
LAC2012 version 5.0.0.2 contains the option to set the report filename for the XML and PDF file in the LAC context method like the following



```
// Setting Reportname in LAC Context method
public void LACReportName(LACContext context)
{
    ;
    context.parmCustomReportFileName('MyReportFileName' + guid2str(newGuid())); // This will be
    used for XML and PDF file names
}
```

413@LAC2012 - Query based report layout fix where N->1 table relation used

In previously versions of LAC2012 the N->1 (many to 1) would cause a wrong output in the XML-file.



LAC2012 version 5.0.0.2	Previously versions
<pre><Detail_Collection> <Detail> <ACQueryRecord_DONOT_CHANGE_MarkupTrans>1</ACQueryRecord_DONOT_CHANGE_MarkupTrans> <FIELD_MarkupTrans_RecId>5637146841</FIELD_MarkupTrans_RecId> <TABLE> <FIELD_MarkupTable_RecId /> <Detail_Collection> <Detail> <ACQueryRecord_DONOT_CHANGE_MarkupTrans>2</ACQueryRecord_DONOT_CHANGE_MarkupTrans> <FIELD_MarkupTrans_RecId>22565421228</FIELD_MarkupTrans_RecId> <TABLE> <FIELD_MarkupTable_RecId /> <Detail_Collection> <Detail> <ACQueryRecord_DONOT_CHANGE_MarkupTrans>3</ACQueryRecord_DONOT_CHANGE_MarkupTrans> <FIELD_MarkupTrans_RecId>5637146842</FIELD_MarkupTrans_RecId> <TABLE> <FIELD_MarkupTable_RecId /> <Detail_Collection></pre>	<pre><Detail_Collection> <Detail> <ACQueryRecord_DONOT_CHANGE_MarkupTrans>1</ACQueryRecord_DONOT_CHANGE_MarkupTrans> <FIELD_MarkupTrans_RecId>5637146841</FIELD_MarkupTrans_RecId> <TABLE> <FIELD_MarkupTable_RecId /> <Detail_Collection> <Detail> <ACQueryRecord_DONOT_CHANGE_MarkupTable>2</ACQueryRecord_DONOT_CHANGE_MarkupTable> <FIELD_MarkupTable_RecId>22565421228</FIELD_MarkupTable_RecId> <TABLE> <FIELD_MarkupTable_RecId /> <Detail_Collection> <Detail> <ACQueryRecord_DONOT_CHANGE_MarkupTrans>3</ACQueryRecord_DONOT_CHANGE_MarkupTrans> <FIELD_MarkupTrans_RecId>5637146842</FIELD_MarkupTrans_RecId> <TABLE> <FIELD_MarkupTable_RecId /> <Detail_Collection></pre>

416@LAC2012 - Removing 160 char in number formats

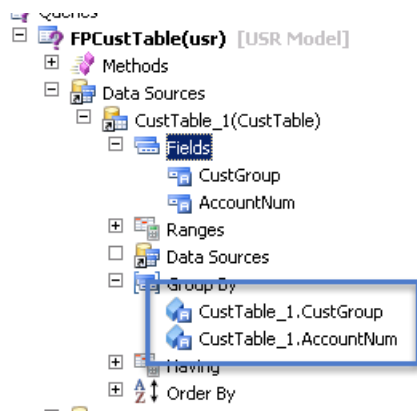
In LAC2012 version 5.0.0.1, 5.0.0.1 CU1 and 5.0.0.1 CU2 there was an issue in relation to the group-separator if it contained a space - Like Swedish (sv-SE). This is fixed in LAC2012 version 5.0.0.2

LAC2012 version 5.0.0.2	LAC2012 version 5.0.0.1, 5.0.0.1CU1, 5.0.0.1CU2
<code><?LACReportCultureId="sv-SE" LACNumberFormat="### ##0,;### ##0,; LACDecSeparator="." LACGroupSeparator=" " LACDecFormat="dcs" MM-dd" LACDateSeparator="." LACDate1="yyyy-M-d" LACDate2="yyyy-MM-dd" LACDate3="yyyy MMM d" LACDate4="yyyy MMMM d" /></code>	<code><?LACReportCultureId="sv-SE" LACNumberFormat="### ##0,;### ##0,; LACDecSeparator="." LACGroupSeparator=" " LACDecFormat="dcs" MM-dd" LACDateSeparator="." LACDate1="yyyy-M-d" LACDate2="yyyy-MM-dd" LACDate3="yyyy MMM d" LACDate4="yyyy MMMM d" /></code>

422@LAC2012 - Issue to use group by in AOT-Query (AOT-Query in Query Wizard)

In previously versions of LAC2012 a Group by in an AOT-Query was causing an “wrong” order in the output.

This is fixed in LAC2012 version 5.0.0.2.



LAC2012 version 5.0.0.2	Previously versions
<pre> - <Detail_Collection> - <Detail> <LACQueryRecord_DONOT_CHANGE_CustTable_1>1</LACQueryRecord_DONOT_CHANGE_CustTable_1> <FIELD_CustTable_CustGroup>20</FIELD_CustTable_CustGroup> <FIELD_CustTable_AccountNum>1001</FIELD_CustTable_AccountNum> </Detail> - <Detail> <LACQueryRecord_DONOT_CHANGE_CustTable_1>2</LACQueryRecord_DONOT_CHANGE_CustTable_1> <FIELD_CustTable_CustGroup>20</FIELD_CustTable_CustGroup> <FIELD_CustTable_AccountNum>1002</FIELD_CustTable_AccountNum> </Detail> - <Detail> <LACQueryRecord_DONOT_CHANGE_CustTable_1>3</LACQueryRecord_DONOT_CHANGE_CustTable_1> <FIELD_CustTable_CustGroup>20</FIELD_CustTable_CustGroup> <FIELD_CustTable_AccountNum>1003</FIELD_CustTable_AccountNum> </Detail> - <Detail> <LACQueryRecord_DONOT_CHANGE_CustTable_1>4</LACQueryRecord_DONOT_CHANGE_CustTable_1> <FIELD_CustTable_CustGroup>20</FIELD_CustTable_CustGroup> <FIELD_CustTable_AccountNum>1004</FIELD_CustTable_AccountNum> </Detail> - <Detail> <LACQueryRecord_DONOT_CHANGE_CustTable_1>5</LACQueryRecord_DONOT_CHANGE_CustTable_1> <FIELD_CustTable_CustGroup>30</FIELD_CustTable_CustGroup> <FIELD_CustTable_AccountNum>100001</FIELD_CustTable_AccountNum> </Detail> - <Detail> <LACQueryRecord_DONOT_CHANGE_CustTable_1>6</LACQueryRecord_DONOT_CHANGE_CustTable_1> <FIELD_CustTable_CustGroup>30</FIELD_CustTable_CustGroup> </Detail> </pre>	<pre> - <Detail_Collection> - <Detail> <LACQueryRecord_DONOT_CHANGE_CustTable_1>1</LACQueryRecord_DONOT_CHANGE_CustTable_1> <AccountNum>001</AccountNum> <CustGroup>20</CustGroup> </Detail> - <Detail> <LACQueryRecord_DONOT_CHANGE_CustTable_1>2</LACQueryRecord_DONOT_CHANGE_CustTable_1> <AccountNum>001</AccountNum> <CustGroup>30</CustGroup> </Detail> - <Detail> <LACQueryRecord_DONOT_CHANGE_CustTable_1>3</LACQueryRecord_DONOT_CHANGE_CustTable_1> <AccountNum>002</AccountNum> <CustGroup>30</CustGroup> </Detail> - <Detail> <LACQueryRecord_DONOT_CHANGE_CustTable_1>4</LACQueryRecord_DONOT_CHANGE_CustTable_1> <AccountNum>003</AccountNum> <CustGroup>10</CustGroup> </Detail> - <Detail> <LACQueryRecord_DONOT_CHANGE_CustTable_1>5</LACQueryRecord_DONOT_CHANGE_CustTable_1> <AccountNum>004</AccountNum> <CustGroup>10</CustGroup> </Detail> - <Detail> <LACQueryRecord_DONOT_CHANGE_CustTable_1>6</LACQueryRecord_DONOT_CHANGE_CustTable_1> <AccountNum>005</AccountNum> <CustGroup>30</CustGroup> </Detail> - <Detail> <LACQueryRecord_DONOT_CHANGE_CustTable_1>7</LACQueryRecord_DONOT_CHANGE_CustTable_1> </pre>

425@LAC2012 – Issue to use UtcDateTime in a report-dialog

In previously versions of LAC2012 the UtcDateTime used in a report-dialog was causing an error like the following

Dialog setup (1 - usmf) - Report name: FPUtcDateTimeTEST, FPUtcDateTime, Report name: FPUtcDateTimeTEST

File Default ranges

General

Execution: Default

Initialize

Set focus: Submit when modified:

Dialog controls

New Delete New group Up Down

Show	Control name	Default value	Range	Load instruction
<input checked="" type="checkbox"/>	FPUtcDateTime		f _x	<input type="checkbox"/> From last value
<input type="checkbox"/>	Language	Calculated...	f _x	<input type="checkbox"/> From default - fixed

Details

Lookup

Extended data type name: CashDiscUTCDateTime Mandatory: Validate:

Multiple values

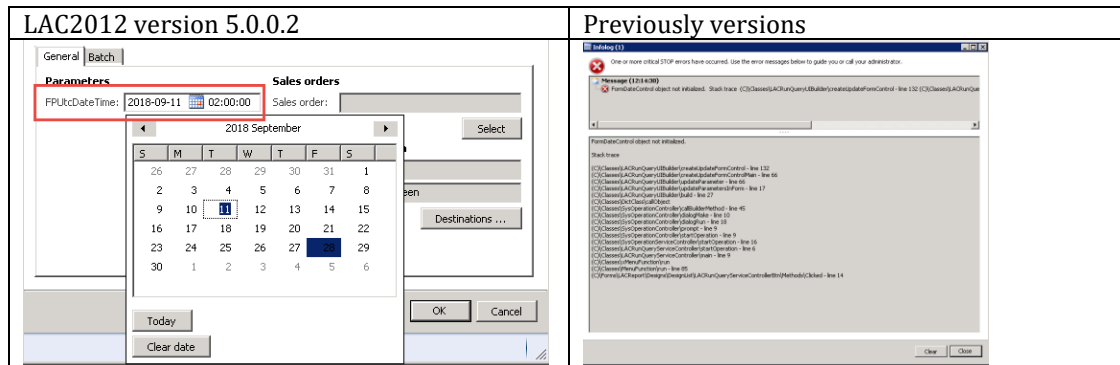
Multiple value type:

FormDateControl object not initialized.

Stack trace

```
(C)\Classes\LACRunQueryUIBuilder\createUpdateFormControl - line 132
(C)\Classes\LACRunQueryUIBuilder\createUpdateFormControlMain - line 66
(C)\Classes\LACRunQueryUIBuilder\updateParameter - line 66
(C)\Classes\LACRunQueryUIBuilder\updateParametersInForm - line 17
(C)\Classes\LACRunQueryUIBuilder\build - line 27
(C)\Classes\DictClass\callObject
(C)\Classes\SysOperationController\callBuilderMethod - line 45
(C)\Classes\SysOperationController\dialogMake - line 10
(C)\Classes\SysOperationController\dialogRun - line 18
(C)\Classes\SysOperationController\prompt - line 9
(C)\Classes\SysOperationController\startOperation - line 9
(C)\Classes\SysOperationServiceController\startOperation - line 16
(C)\Classes\LACRunQueryServiceController\startOperation - line 6
(C)\Classes\LACRunQueryServiceController\main - line 9
(C)\Classes\xMenuFunction\run
(C)\Classes\MenuFunction\run - line 85
(C)\Forms\LACReport\Designs\DesignList\LACRunQueryServiceControllerBtn\Methods\Clicked
- line 14
```

This is fixed in LAC2012 version 5.0.0.2.



443@LAC2012 - Loading fields and methods from other report

In previously versions of LAC2012 methods was not loaded in the Query-Wizard when using the function 'Load from report'.

This is fixed in LAC2012 version 5.0.0.2.

Bug fixes

Case no.	Description	Ticket no.
292@LAC2012	Wrong relation in the report PSAManageInvoice (between the tables PSAManageInvoiceTmp and ProjInvoiceRevenue)	
359@LAC2012	In the report SalesPackingSlip the Relation to the table CustPackingSlipTrans was missing for the default	
367@LAC2012	Not possible to cut and paste colon (:) into an expression	#7108
369@LAC2012	Resending the report 'PSAProjectInvoice' from the Lasernet-archive always preview	#7756 #7197
370@LAC2012	AOS Printer-update fails when there's no printers.	#7283
373@LAC2012	Giro double entry when resending multiple invoices	#7716
383@LAC2012	The AX client crashes when printing a multi-selection containing a disabled datasource	#7460
385@LAC2012	Fixed value in ranges (like 0,1,2) in the Query Wizard get changed after finishing the Query-Wizard	#7409
393@LAC2012	Empty XML-file when using replacement for the report RFQSend	
394@LAC2012	When using the function 'Load from report' in the Query Wizard manually added fields was missing and it was needed to run the function 2 times to get the fields	#7622
405@LAC2012	Force-rerun was shown in printer-dialog	
413@LAC2012	Query based report layout fix where N->1 table relation used	
416@LAC2012	Removing 160 char in number formats	
422@LAC2012	Issue to use group by in AOT-Query (AOT-Query in Query Wizard)	
425@LAC2012	Issue to use UtcDateTime in a report-dialog	
443@LAC2012	Loading fields and methods from other report	

Enhancements

Case no.	Description	Ticket no.
309@LAC2012	Option to use and return value through LAC context method	
368@LAC2012	Option to add all <i>language texts</i> from calculated	#7161
386@LAC2012	Lookup for all query-report (replacement reports) when selecting replacement report	
392@LAC2012 (#254)	Option to add multiple/all attachments from line-level	#7641
402@LAC2012	Lasernet context code for creating totals/subtotals within the replacement for the Project Invoice	(Replacement package)
403@LAC2012	Relation to the ProjProposal tables for the report PSAProjInvoice	#7814
410@LAC2012	Option to transfer and rename data sources in Related sources	
411@LAC2012	Labels without prefix in Lasernet context methods	
412@LAC2012	Report filename in the Lasernet context methods	

General bugfixes / enhancements

Case no.	Description	Ticket no.
345@LAC2012	Update to internal parameter-values	
366@LAC2012	Running export/import in batch fails when calling WinAPI	
410@LAC2012	Renaming of datasources could cause a wrong object "index" in the expressions/segmented entry	
418@LAC2012	Option to delete non-existing datasource	
421@LAC2012	Easier update/setting of the report-properties/permission in the Laernet tutorials Like the report properties <i>Overlay, Attachments, Report-language, Preview format, Lasernet-archiving</i> and <i>Email-body/subject</i>	
424@LAC2012	Ranges (hidden ranges) between tables was in some scenarios shown in the Query-reports	
428@LAC2012	Warning when adding fields from an Array Warning is removed when added fields from an Array	
431@LAC2012	Update in relation to Lasernet tutorials	
432@LAC2012	Performance optimization in relation to the class LACReportOrigin_Query	
436@LAC2012	Update to the <i>Number format</i> when loading datatype	
429@LAC2012	Wrong clean-up when importing printers Wrong tables was cleaned up when importing printers The table <i>LACRelatedSourceFields</i> was used instead of the tables <i>LACPrinters</i> and <i>LACPrinterProfiles</i>	
438@LAC2012	Hyphen is removed from Archive-entry when EmailSubject is blank	
442@LAC2012	Support for the report CashReceiptsUsageReport (R3CU13)	